

2014.05.06

Re: Ongoing defacement of materials by TPL Processing staff

To the TPL Board:

Due to staff indifference and negligence, thousands of items in TPL's collection, including what I gather are most new periodicals, are defaced by TPL's own Processing staff each month.

The usual victims here are new periodicals, which, to correspond with TPL ideology, must not be simply barcoded but also RFID-tagged (even though the latter includes the former). TPL Processing staff sit there, I gather, bored all day, flipping through one magazine after another, idly chatting with their girlfriends at neighbouring desks or just listening to their iPods, till something big and shiny breaks through their glazed-eye stupor. That big shiny thing is always editorial copy, typically a nice photo on a double-page spread. It is *right there* that staff plop down a giant TPL RFID tag, defacing the publication.

Have you not noticed this? Of course not. You don't use the library. You allegedly didn't even have library cards till you were appointed to the Board. Why would you borrow a magazine from the library you run? *Of course you know nothing about this.* It's happening.

I shouldn't have to be the one to explain that RFID tags must be placed on an ad or masthead, or on the front or rear cover, or *anywhere other than* on editorial copy and *never, ever* on an editorial photograph no matter how inconvenient. The fix is simple: Just wake up.

Something else you have never heard of is the unified-tag experiment. (At what branch?) Since RFID tags also contain a barcode, there is very little to prevent Processing from eliminating the traditional barcode altogether and using only a unified tag on covers of magazines. Then we have a discussion about obscuring the actual title of the magazine.

I have complained to TPL's Processing department on several occasions about the issue, and have been assured the problem has been solved. It hasn't. New periodicals still arrive with RFID tags plopped right onto editorial copy. I can prove it: I got pictures.

Issue an order to fix this problem once and for all.



2013.08.30 14:04



2013.08.22 19:45



2013.02.05 10:04



2013.09.18 14:37



2013.12.13 10:23



2014.01.09 15:08



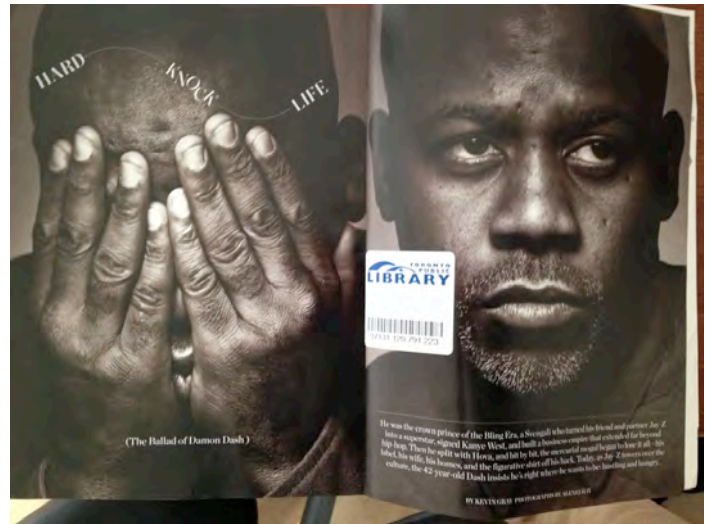
2014.01.09 15:35



2014.01.09 15:57



2014.01.14 13:06



2014.01.29 13:26



2014.01.30 19:36



2014.02.04 13:58



2014.02.04 14:16



2014.02.04 14:30



2014.02.06 15:28



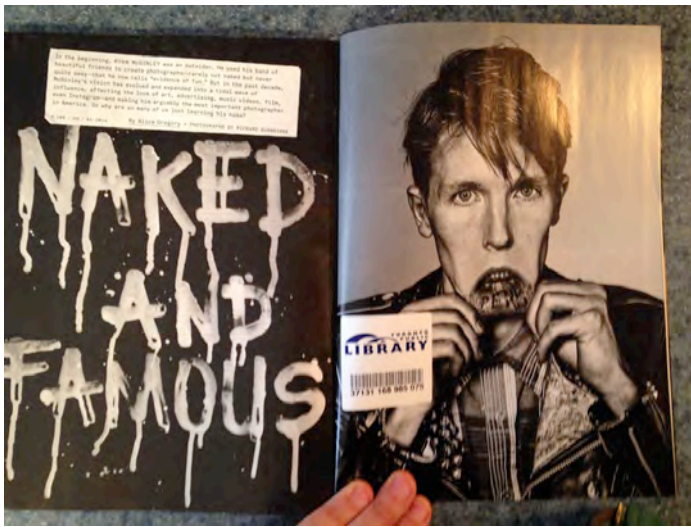
2014.02.11 14:47



2014.02.11 15:07



2014.02.16 19:09



2014.04.04 12:59



2014.04.04 13:21



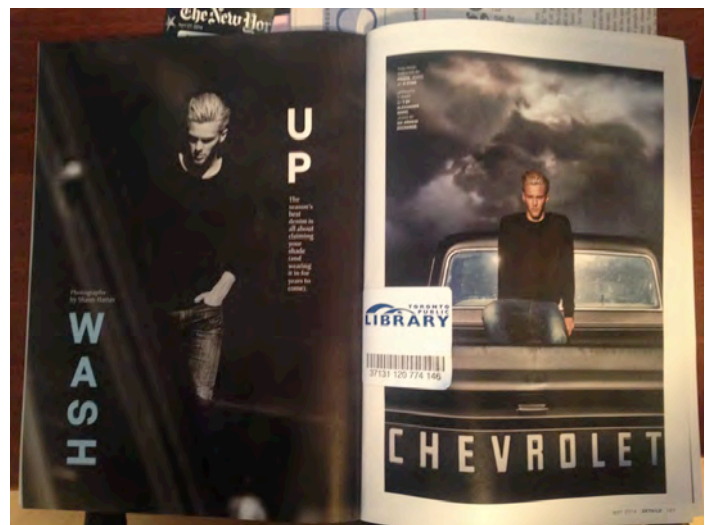
2014.04.27 11:47



2014.04.27 12:30



2014.04.27 12:43



2014.05.01 17:55



2013.04.20 15:27



2012.06.03 12:05



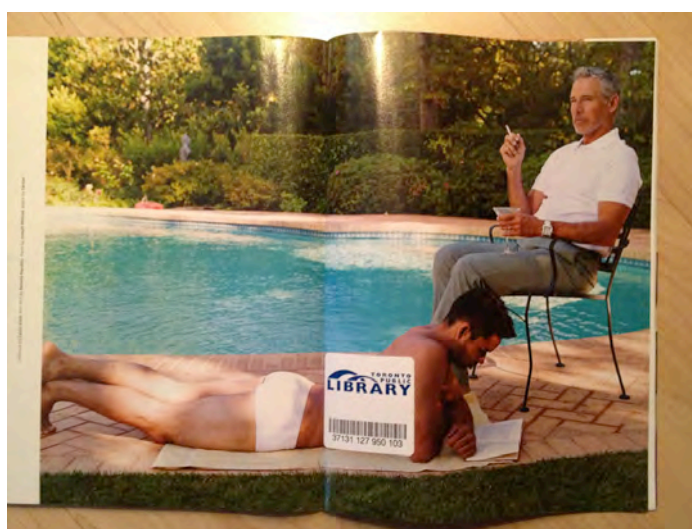
2011.12.13 14:27



2013.03.27 23:36



2010.09.30 15:44



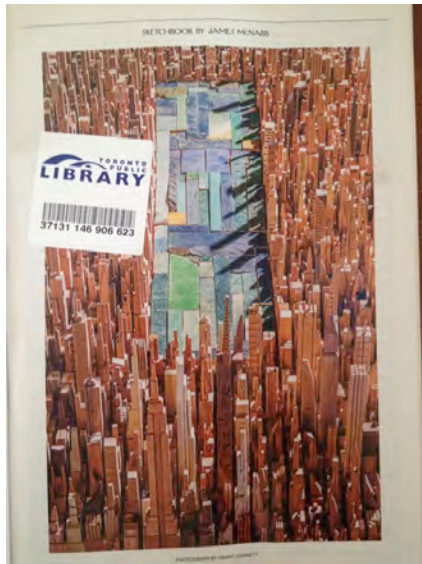
2012.10.24 17:10



2010.09.11 15:45



2013.10.23 15:22



2013.10.23 15:38



2013.10.26 10:50



2013.11.08 09:49



2013.06.20 19:41