

Representative Branch/Department Complements 2012*

Tier	Branch/Department	Hours/Week (Mon – Sat.)	Public Service FTE	Page FTE	Total FTE
Neighbourhood					
Small	Taylor Memorial	40	3.00	.90	3.90
Medium	Mount Dennis	50.5	6.50	1.28	7.78
Large	Deer Park	62	11.00	2.40	13.40
District					
	Malvern	65.5	19.80	6.87	26.67
	Richview	65.5	21.36	7.08	28.44
Research and Reference					
NYCL					
Large Circulation Department	Circulation, Browsery & Teens	65.5	25.90	2.80	28.70
Small Subject Department	Science & Technology	65.5	7.60	2.49	10.09
TRL					
Large Subject Department	Humanities & Social Sciences	60.0	21.60	0.00	21.60
Small Subject Department	Arts	60.0	10.29	0.00	10.29

*Note: Based on complement figures dated July 31, 2012.

Representative Research & Reference Department Complements

Because of the breadth of Research & Reference services and the unique or system-wide nature of some of them, there is considerable variety in the structure of departments.

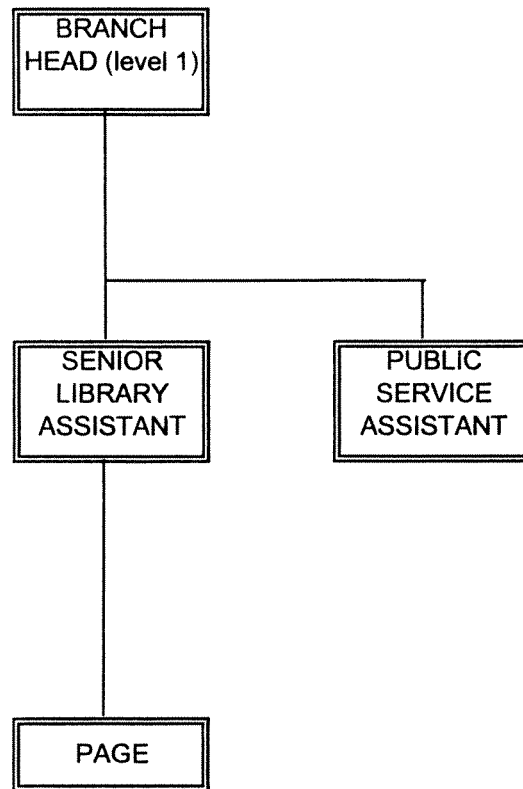
The subject departments, large and small, have a fairly consistent structure: Senior Department Head, Services Specialist, Librarians, Senior Library Assistant, Public Service Assistants (and Pages at NYCL only).

NYCL's Circulation, Browsery and Teens Department is an example of a large multifunctional circulation department and has a Senior Department Head, Operations Supervisors, Services Specialist (for youth services), Librarians, Public Service Assistants and Pages.

Answerline, the system-wide quick information service, is one of the unique departments and has a Senior Department Head, Librarians and Library Assistants.

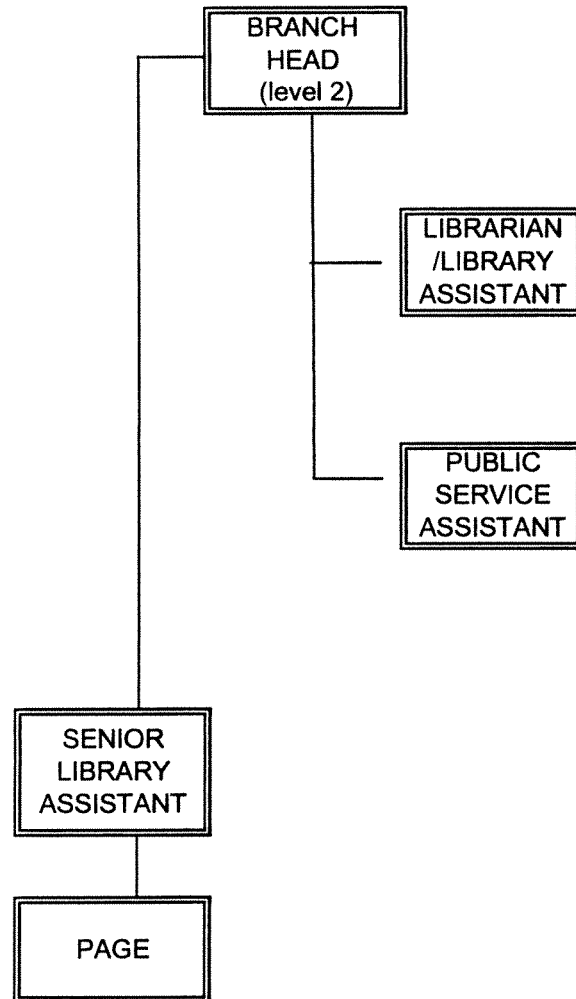
Preservation and Digitization is an example of another specialized department. It includes a Senior Department Head, Conservators, Exhibits Designer, Photographer, Digital Collections Technicians and a Binding and Collections Maintenance Assistant.

SMALL NEIGHBOURHOOD BRANCH



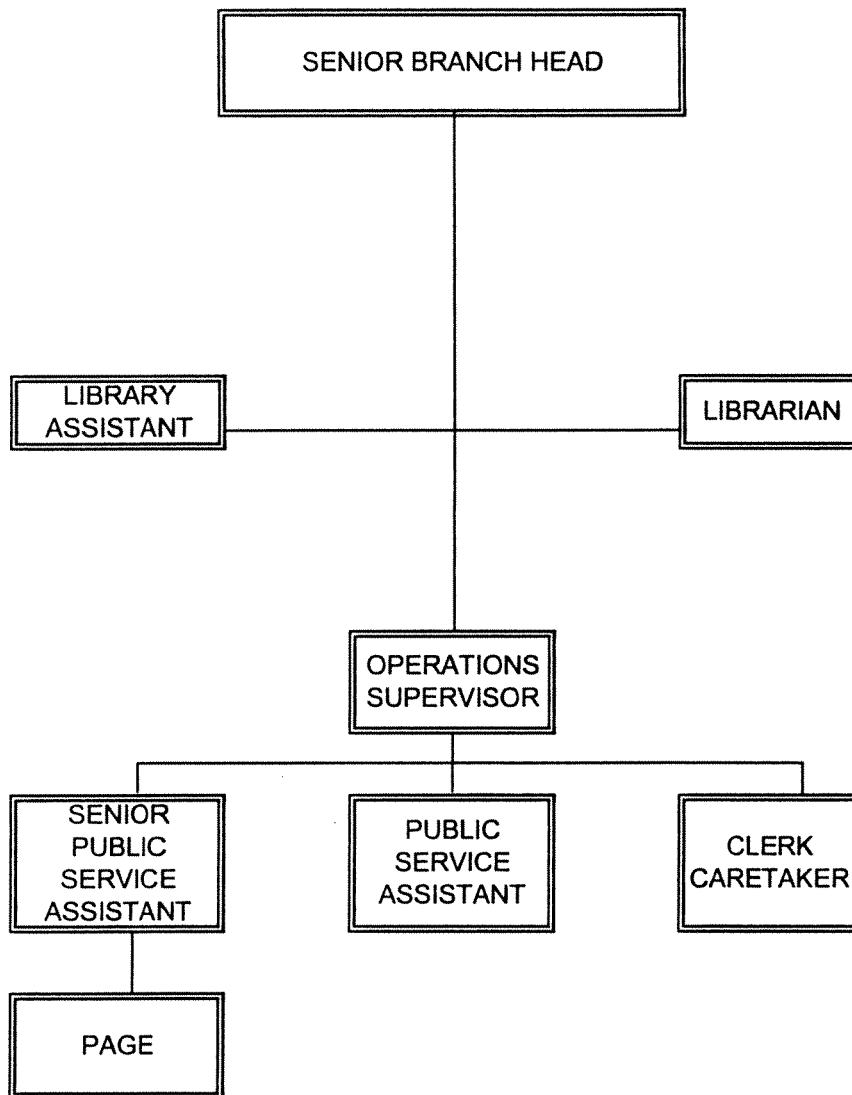
Note: • There are 32 small neighbourhood branches across the City

MEDIUM NEIGHBOURHOOD BRANCH



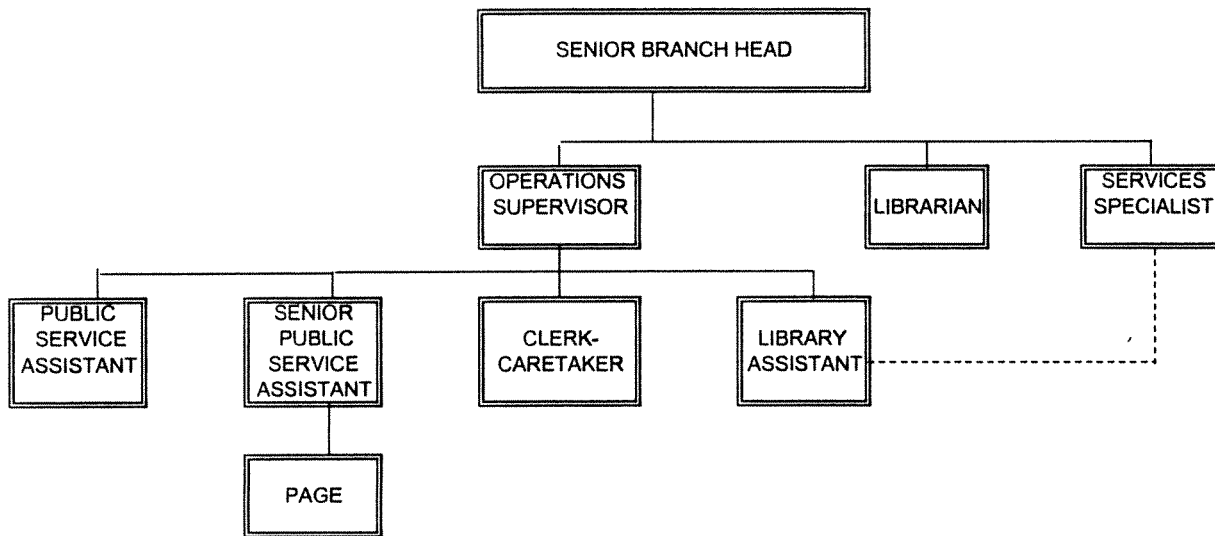
Note: • There are 37 medium neighbourhood 2 branches across the City

LARGE NEIGHBOURHOOD BRANCH



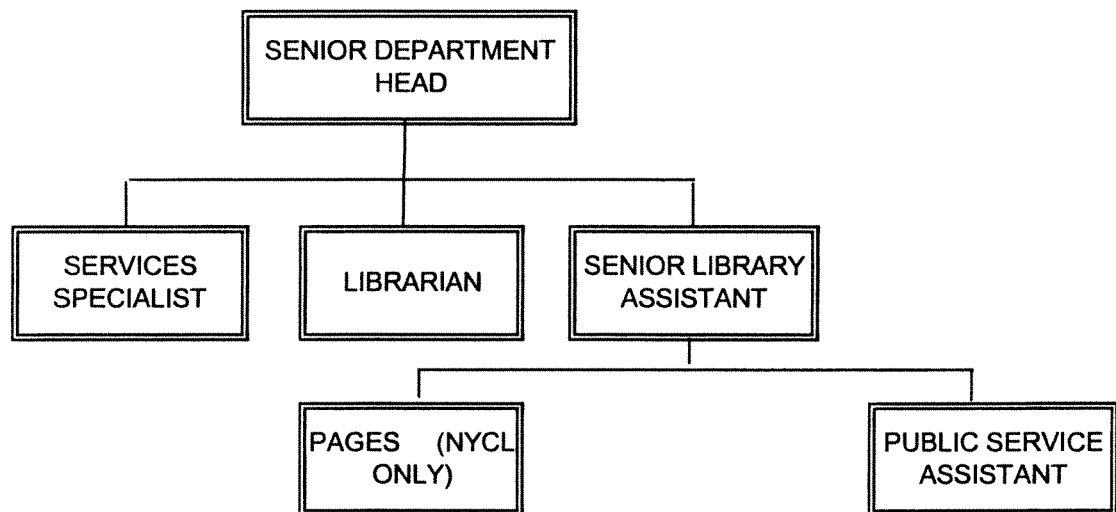
Note: • There are 8 large neighbourhood 1 branches across the City

DISTRICT BRANCH



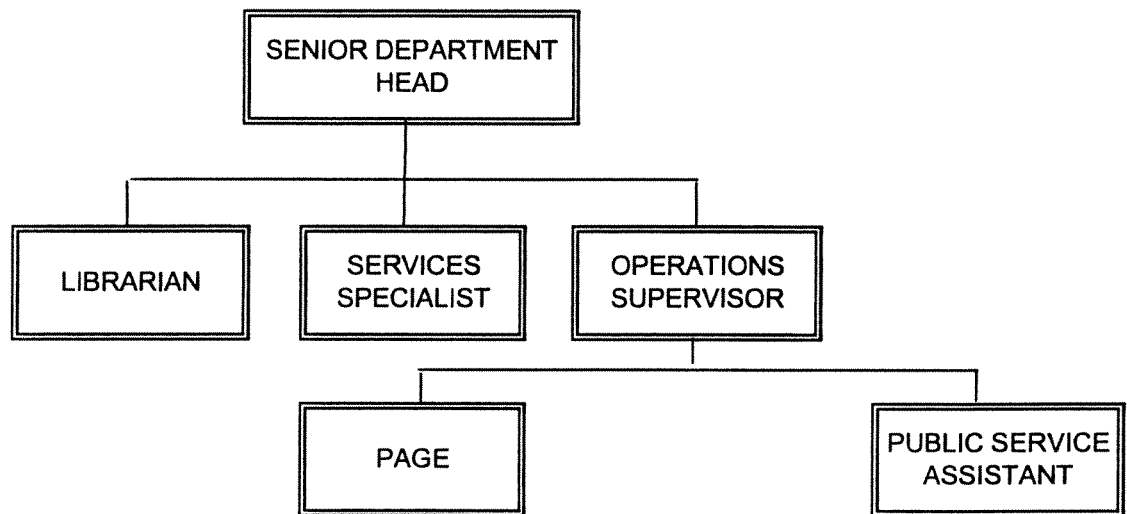
Note: • There are 17 district branches across the City

Representative Research and Reference Department Structures Subject Departments



Note: There are 14 subject departments in Research and Reference. The number of staff per position in each department is determined by the factors outlined in the report.

Representative Research and Reference Department Structures NYCL Circulation/Browsery/Teens



Department Structures

TRL Preservation & Digitization

