



# Centennial Library Update

**Presenter:** **Gail Rankin, Senior Manager, Facilities Management**

**Resources:** Ken Fukushima, Ken Fukushima Architecture  
Adam McCaughan, mccallumsather architecture  
Susan Martin, Manager Capital Project Planning

January 25, 2020

# Agenda

**We are providing an update on this exciting project that was first reviewed with the Library Board in December 2019**

- Context
- Community consultation
- Design development
- Design review panel
- Project schedule and next steps

# Context: existing branch



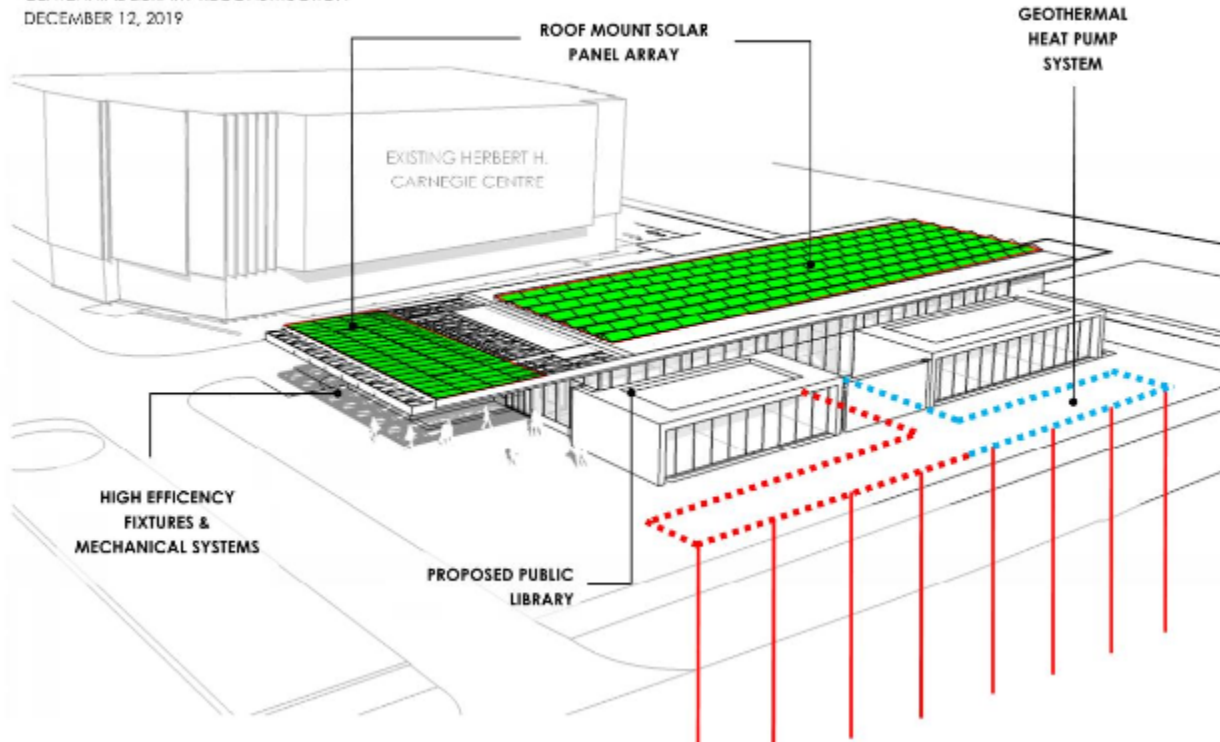
## Context: What is Net Zero?

The total amount of energy used on an annual basis is equal to the amount of renewable energy created on the site

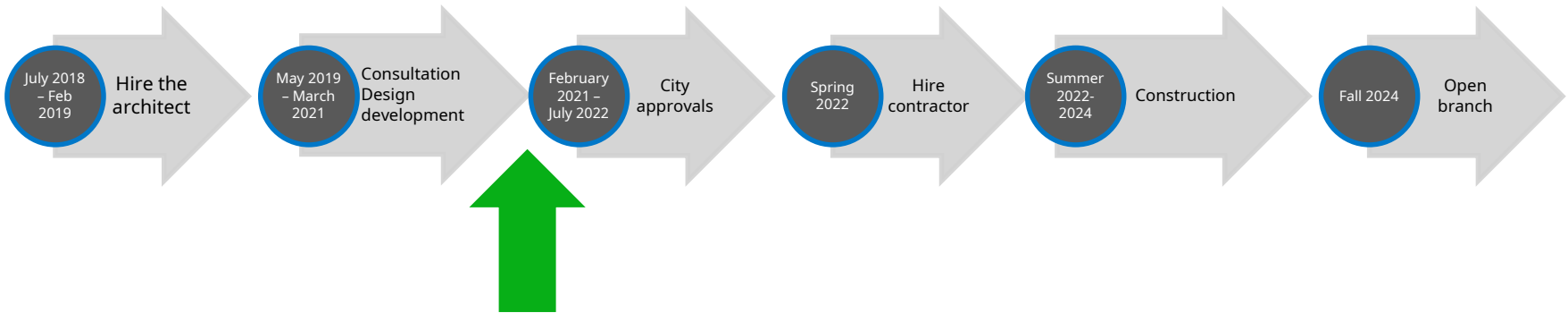
### RENEWABLE ENERGY SYSTEMS

CENTENNIAL LIBRARY RECONSTRUCTION

DECEMBER 12, 2019



The schedule has been impacted by COVID-19



## Stakeholder consultation is an important part of every project

### **Staff consultation**

- Branch head participated on design team meetings
- Staff meetings with architect Summer 2019

### **Public consultation**

- Public Open House – June 20, 2019
- Public Focus Groups – June to July 2019
- In branch surveys – July and October 2019

### **Consultation with Parks, Forestry and Recreation**

- May 2019 – May 2020

### **Councillor Pasternak Updates**

- May 2020 and December 2020

# Upcoming Consultation

**Stakeholder consultation is an important part of every project**

## **Public Consultation:**

- Focus group / review with arena users – February 2, 2021
- Online open house presentation of design to public – February 10, 2021

## Improves the streetscape on Finch Ave. W. including views in and out of the library

Request	Existing	New branch	Achieved
Larger branch	6,866 sq. ft.	15,000 sq. ft.	✓
Modern Design		Yes	✓
Ground floor Programme Room	No	Ground floor Programme Room 60 people and can be used for quiet study	✓
Quiet study rooms	None	5 of various sizes	✓
Maintain large study tables in Public Area	7 tables	Same or more, larger tables for physical distancing	✓
More Lounge Seating	8	20 plus courtyard and outdoor plaza seating	✓
Zoned spaces for Children's, Teens and Adults	No	Yes, well zoned spaces	✓
More public washrooms and accessible washrooms	2 Downstairs; 1 is Barrier Free	7 Washrooms; 2 Barrier Free multi-stall, 2 single use, and 1 Universal/Family	✓
Drinking fountain	No	Yes, bottle filling station	✓
Maintain Free parking	18	18 - includes 2 compliant barrier free spots with access aisle and 5 electric vehicle charging stations	✓
Vending machines	Yes	Yes – with café seating	✓
More natural light	Windows	More than 3x more glazing and views compared to existing	✓



# Design development

Significant research and consultation with library staff and City departments has occurred during design development

- Traffic and Parking Impact Study
- Engineering collaboration through design development to ensure the branch will achieve Net Zero
- Landscaping design developed
- Development of concepts to integrate community based art and history
- Presentations and submissions to City Departments - Zoning, Planning, Parks and Recreation, City Legal
- Design development and material selection to ensure adaptability / flexibility for post-COVID

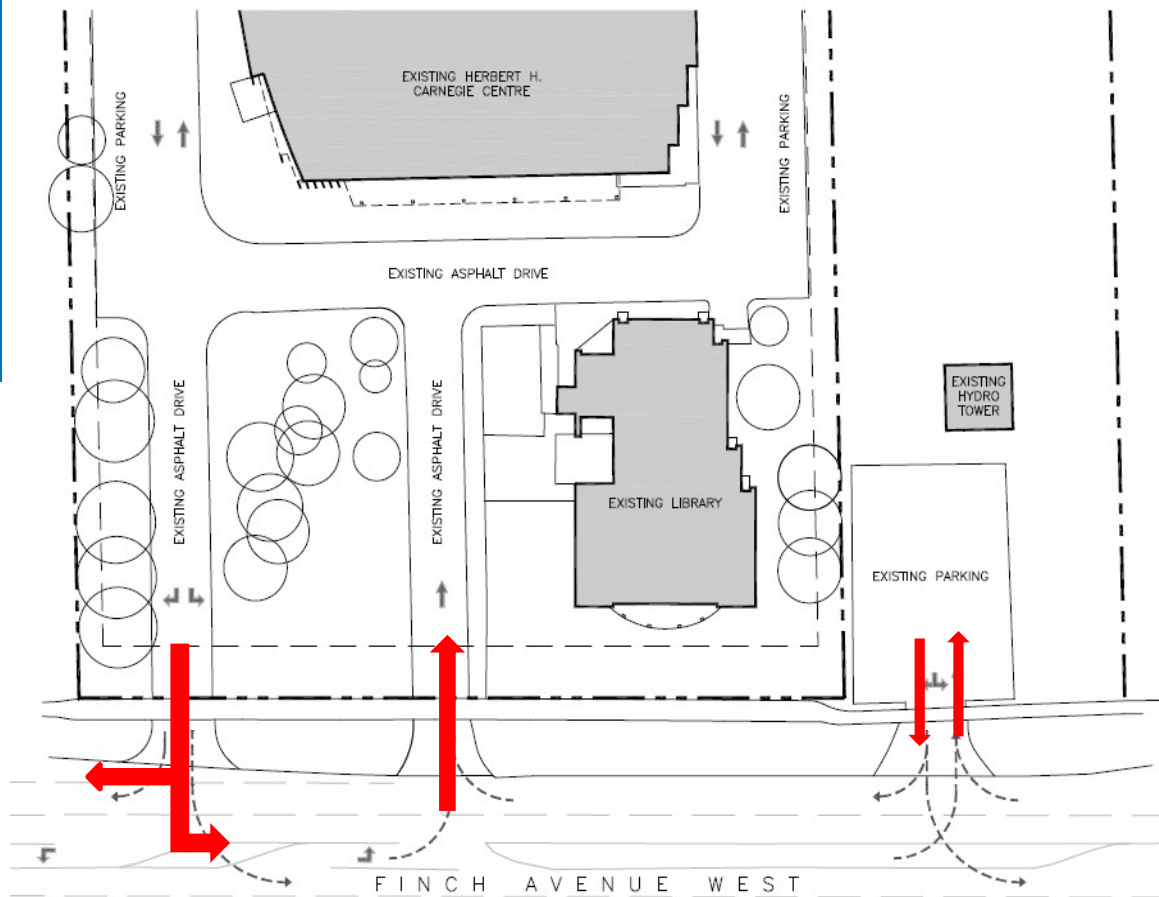
# Site Plan

## Existing conditions



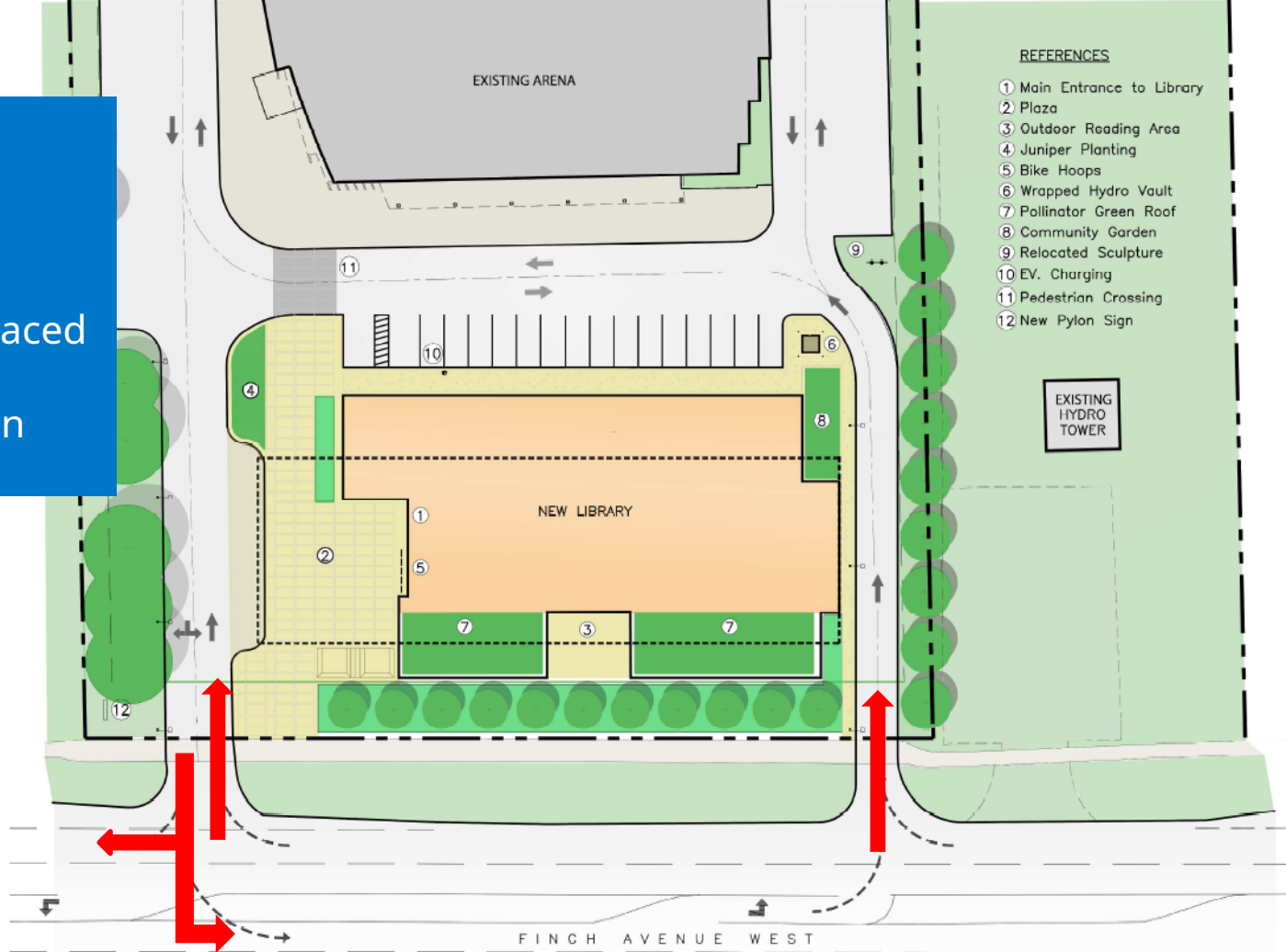
# Existing conditions

Leads to congestion and confusion



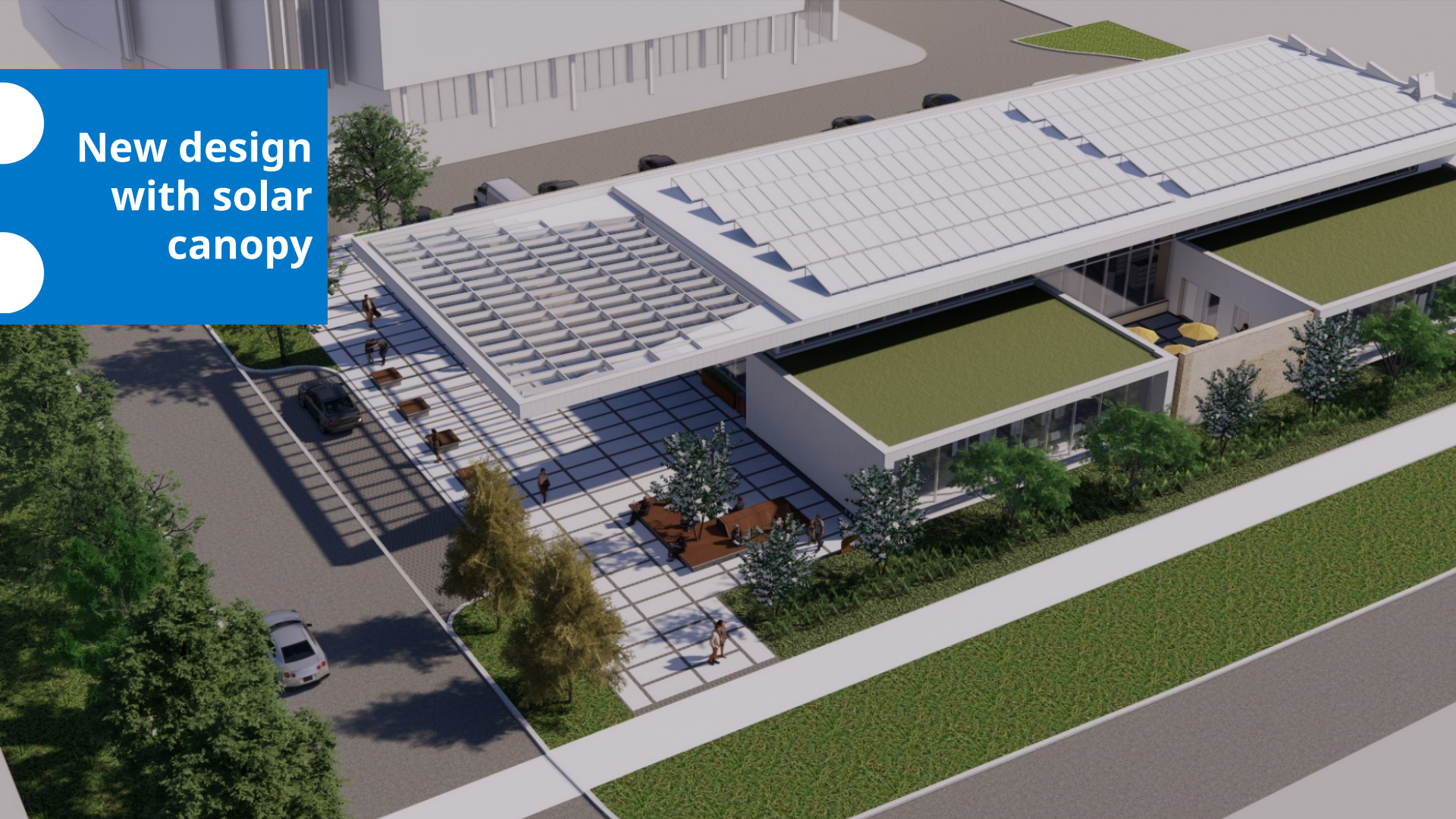
# Proposed new plan

two driveways spaced  
far apart should  
reduce congestion

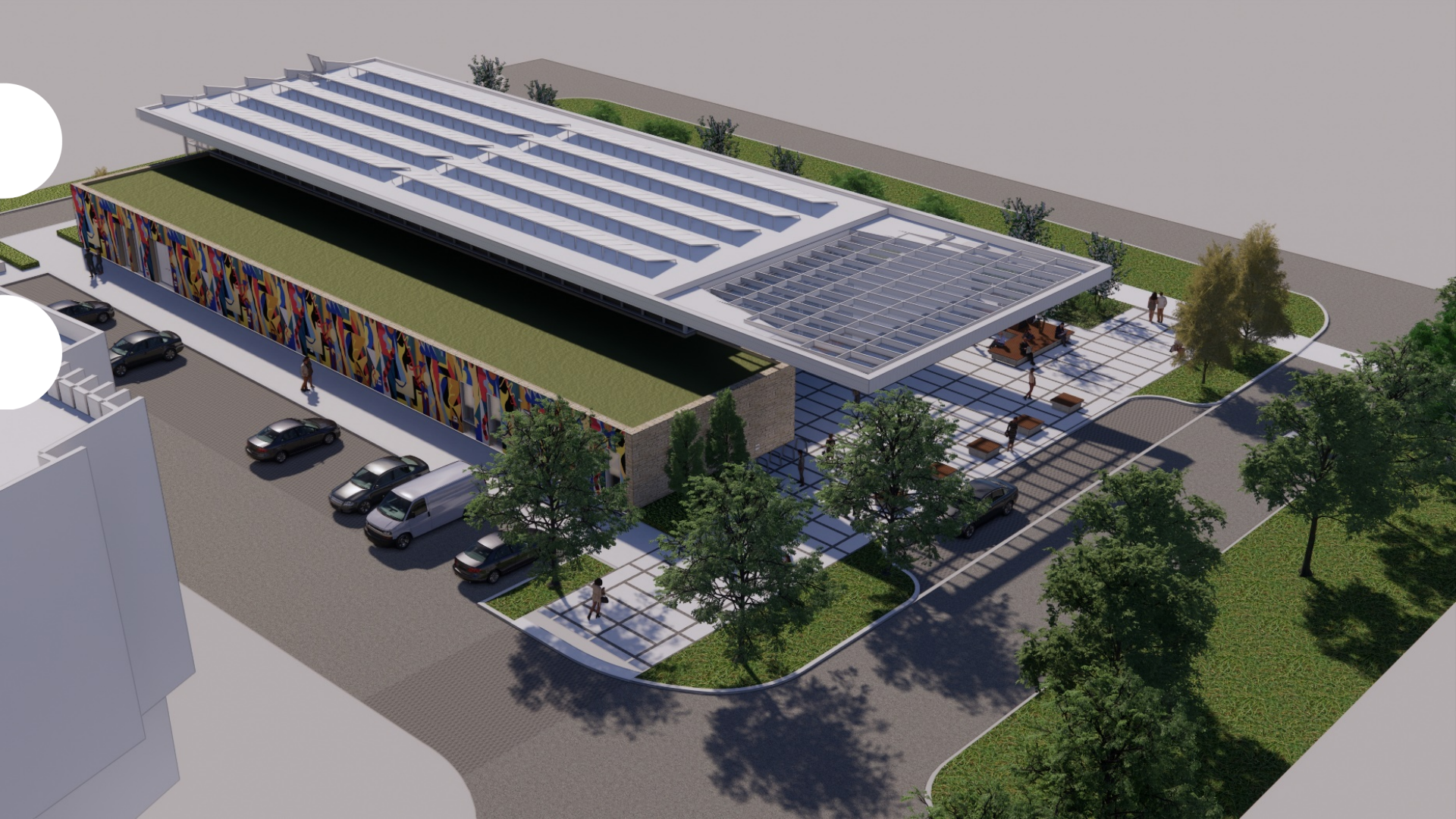




**New design  
with solar  
canopy**

















Improves the streetscape on Finch Ave. W. including views in and out of the library





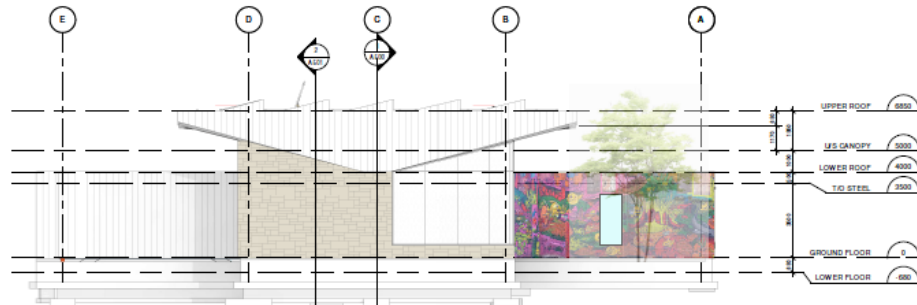
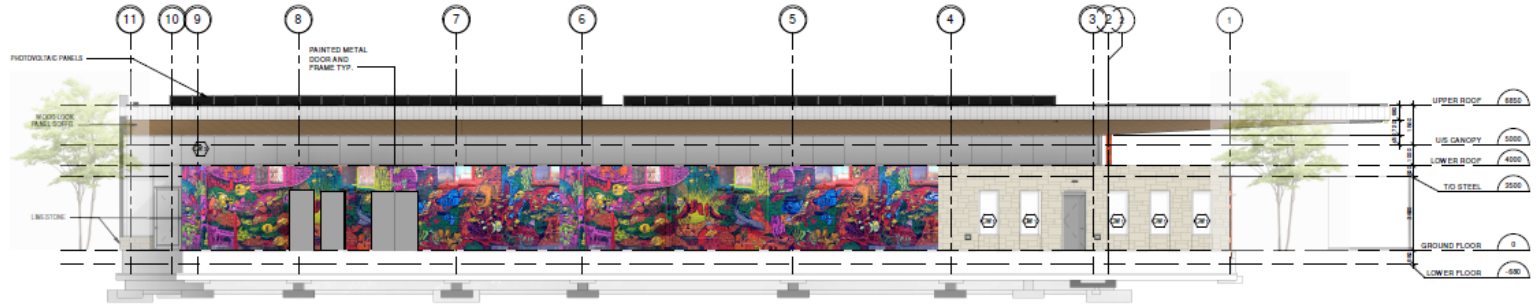


Library's relationship to the arena – still visible, sympathetic, complementary design



# Elevations – North / east side:

Part of the building is design as a canvas for art – a great opportunity for community engagement



# Presentation at Design Review Panel:

Overwhelmingly positive response from the Design Review Panel

*“applaud the proponent team and the City (Library); aspirations for the projects are great; done homage to the early building on site”*

*“Commend the Library - championing contemporary design; championing energy efficiency; an exemplar again - bringing together on each and every (library) project; doing the right thing”*

*“Appreciate the great potential being shown here – always hope a project will come along that pushes the boundaries of design and sustainability – this one did; responsibility of design review panel is to look beyond; how they impact on the broader context – this is a civic moment – moment for a great library, moments for a statement about sustainability”*



## Schedule and next steps

- Complete community consultation – February 2021
- Site plan approval - 12 month approval process – estimated February 2022
- Determine temporary branch service plan – February 2022
- Hire the contractor – Spring – Summer 2022
- Open temporary branch – Summer 2022
- Construction starts – Summer 2022 – Summer 2024
- Branch reopening – Fall 2024



Thank  
you!

