

Representative Branch/Department Complements*

Tier	Branch/Department	Hours/Week (Mon – Sat.)	Public Service FTE	Page FTE	Total FTE
Neighbourhood					
Small	Taylor Memorial	40	3.00	.90	3.90
Medium	Mount Dennis	50.5	6.50	1.28	7.78
Large	Deer Park	62	12.50	2.40	14.90
District					
	Malvern	65.5	21.80	6.87	28.67
	Richview	65.5	23.76	7.08	30.84
Research and Reference					
NYCL					
Large Circulation Department	Circulation, Browser & Teens	65.5	26.10	2.80	28.90
Small Subject Department	Science & Technology	65.5	8.60	2.49	11.09
TRL					
Large Subject Department	Main Reference	60.0	22.60	0.00	22.60
Small Subject Department	Performing Arts	60.0	10.20	0.00	10.20

*Note: Based on complement figures dated August 31, 2011. 2012 efficiency reductions are not reflected.

Representative Research & Reference Department Complements

Because of the breadth of Research & Reference services and the unique or system-wide nature of some of them, there is considerable variety in the structure of departments.

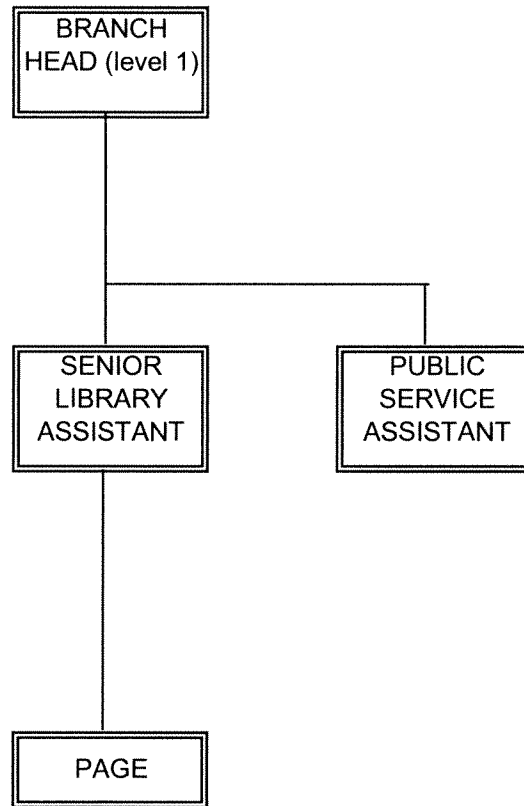
The subject departments, large and small, have a fairly consistent structure: Senior Department Head, Services Specialist, Librarians, Senior Library Assistant, Public Service Assistants (and Pages at NYCL only).

NYCL's Circulation, Browser and Teens Department is an example of a large multifunctional circulation department and has a Senior Department Head, Operations Supervisors, Services Specialist (for youth services), Librarians, Senior Library Assistants, Public Service Assistants and Pages.

Answerline, the system-wide quick information service, is one of the unique departments and has a Senior Department Head, Librarians and Senior Library Assistants.

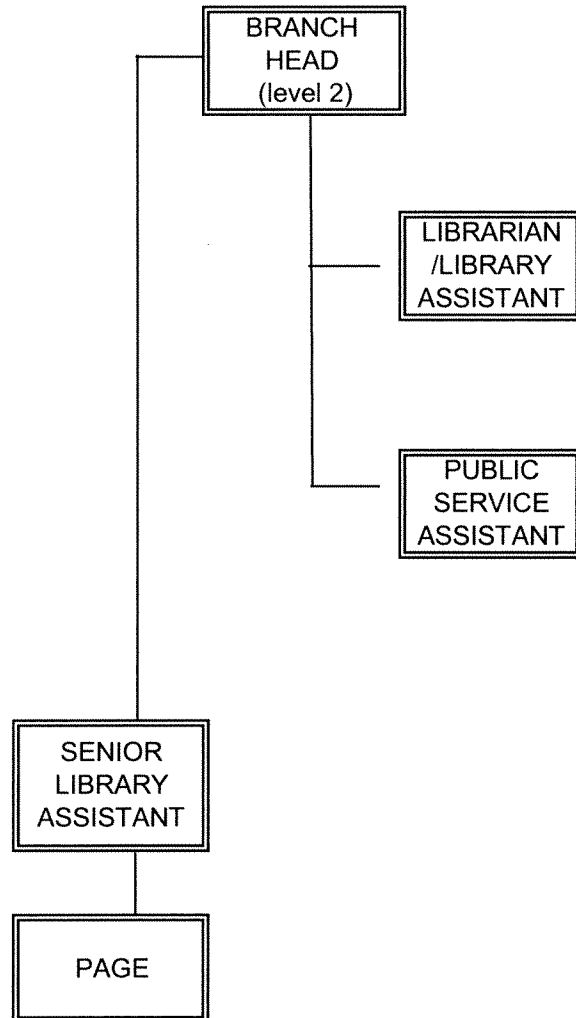
Preservation and Digitization is an example of another specialized department. It includes a Senior Department Head, Conservators, Exhibits Designer, Photographer, Digital Collections Technicians and a Binding and Collections Maintenance Assistant.

SMALL NEIGHBOURHOOD BRANCH



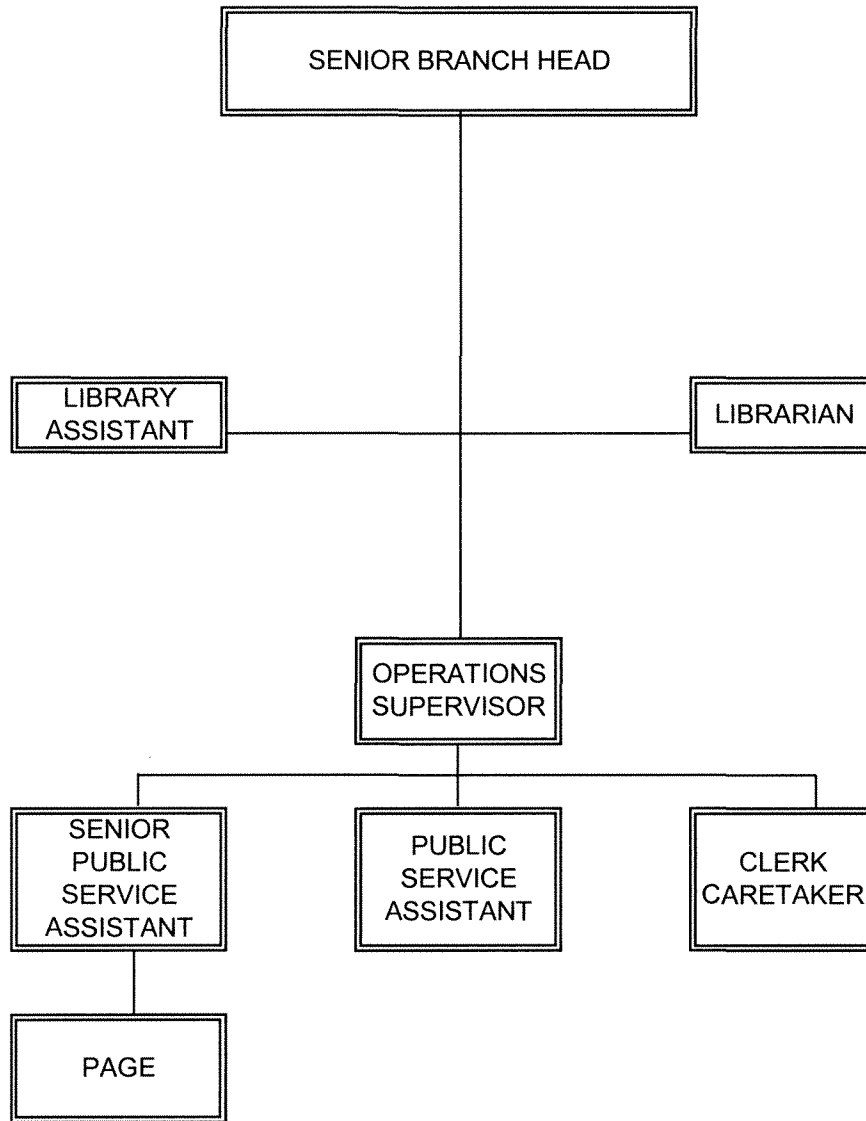
- Note:
- There are 31 small neighbourhood branches across the City
 - The number of staff per position in each branch is determined by the factors outlined on page 3 of the report

MEDIUM NEIGHBOURHOOD BRANCH



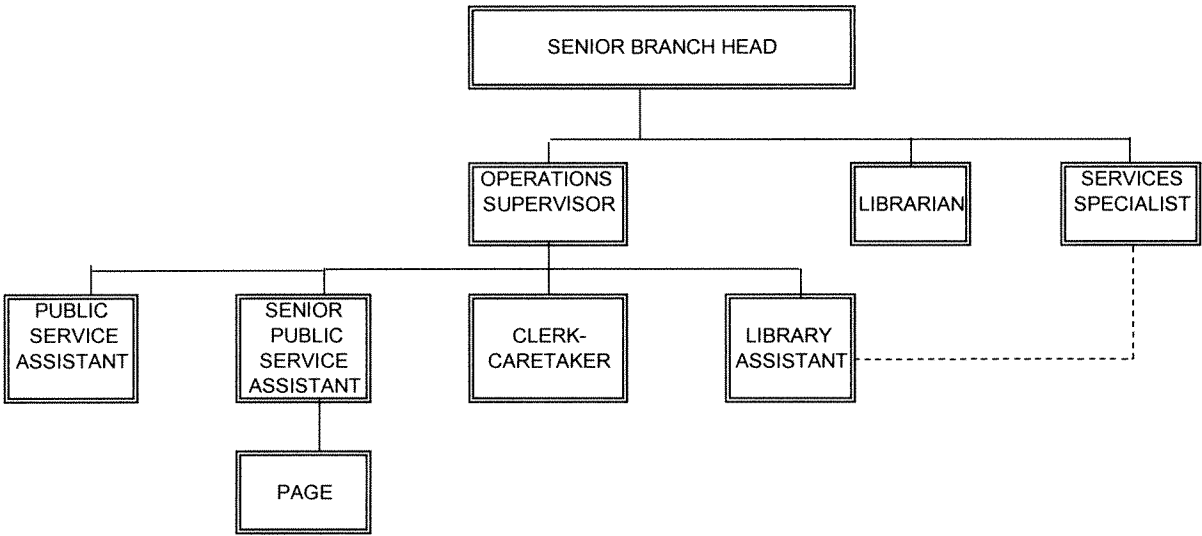
Note: • There are 38 medium neighbourhood 2 branches across the City
• The number of staff per position in each branch is determined by the factors outlined on page 3 of the report

LARGE NEIGHBOURHOOD BRANCH



Note: • There are 8 large neighbourhood 1 branches across the City
• The number of staff per position in each branch is determined by the factors outlined on page 3 of the report

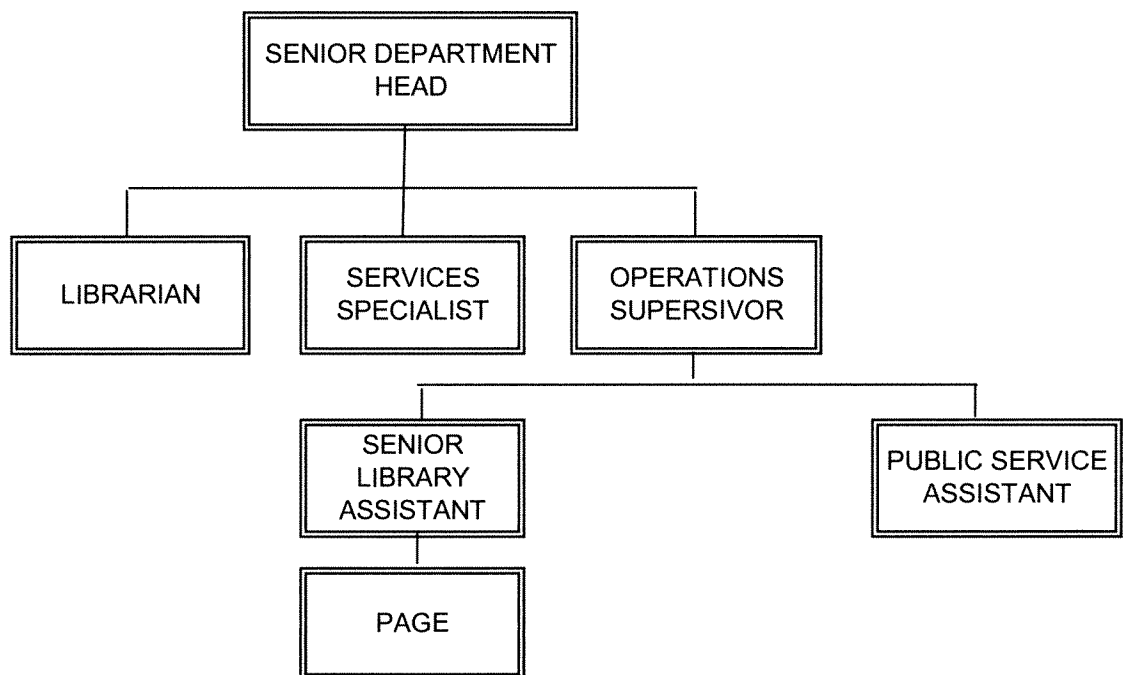
DISTRICT BRANCH



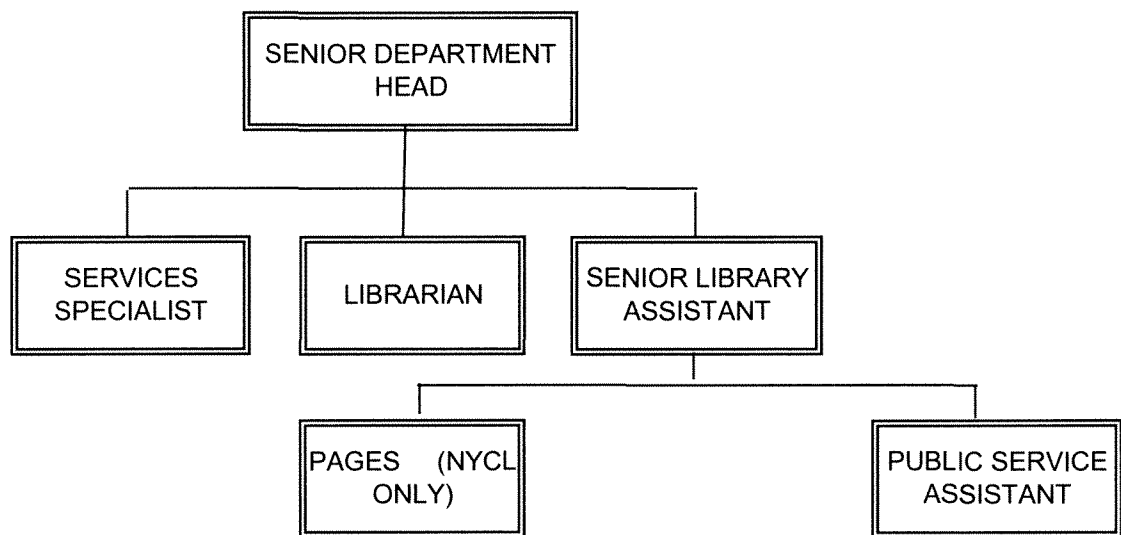
Note:

- There are 17 district branches across the City
- The number of staff per position in each branch is determined by the factors outlined on page 3 of the report

Representative Research and Reference Department Structures NYCL Circulation/Browsery/Teens



Representative Research and Reference Department Structures Subject Departments



Note: There are 14 subject departments in Research and Reference. The number of staff per position in each department is determined by the factors outlined in the report.