



# St. Lawrence Branch Expansion / Relocation

April 2, 2026 - 6:00 – 8:00 pm



## Land Acknowledgement

*Toronto Public Library is situated on Indigenous land and Dish with One Spoon territory. This is the traditional territory of the Haudenosaunee (ho-den-oh-sho-nee) Confederacy, the Wendat, and the Mississaugas of the Credit First Nation. Toronto Public Library gratefully acknowledges these Indigenous nations for their guardianship of this land.*

# Agenda

1. Opening remarks and introductions
2. City Librarian Moe Hosseini-Ara
3. Ward 13 Councillor Chris Moise
4. Project History
5. Architect Presentations
6. Current Library Overview
7. Service Delivery Model, proposed features of new branch
8. High-level Project Schedule
9. Q&A
10. Survey
11. Next Steps

## City Librarian Remarks



### **Moe Hosseini-Ara**

Toronto Reference Library  
789 Yonge Street  
Toronto, ON M5H 2N2  
Telephone: 416-393-7032  
Email: mhoss@tpl.ca

# Councillor Remarks



## **Councillor Chris Moise** **Ward 13 – Toronto Centre**

Contact Information

Toronto City Hall

100 Queen Street West, Suite A5

Toronto, ON M5H 2N2

Telephone: 416-392-7904

Email: [Councillor\\_Moise@toronto.ca](mailto:Councillor_Moise@toronto.ca)

Toronto Centre Constituency Office

329 Parliament Street

Toronto, ON M5A 2Z3

Telephone: 416-392-7904



**100**  
branches +  
online



**91.5%**  
customer  
satisfaction  
with the  
library

**93%**

of Torontonians  
agree that public  
libraries are an  
important resource  
for the community



**biggest &  
busiest** in  
North America



**81%** of  
Torontonians  
used the  
library in 2024



 **visits**  
**45 M**

 **materials  
borrowed**  
**28.1 M**



How Toronto's Library will  
help our city and its residents  
adapt, connect and thrive.



Toronto Public Library  
strategic plan 2025-2029

[tpl.ca](http://tpl.ca)

**tpl:**

# Our 2025 2029 priorities

## 1 social connection, civic engagement and democracy

We will embed opportunities for **social connection, civic dialogue** and **critical thinking** in everything we do...  
...so that residents have the skills to **sustain a healthy democracy.**

## 2 shared community spaces

We will accelerate the **enhancements of our physical spaces...**  
...to establish more **welcoming, safe, inclusive and sustainable** multi-use environments that **build resilience and belonging** in every neighbourhood.

## 3 learning and growth

We will expand **learning opportunities for all ages** to develop multiple literacies and **personal and professional skills...**  
... so that residents can thrive, build economic resilience, and **adapt to new technologies**, such as AI.

## 4 awareness and availability

We will **increase awareness and availability** of library services...  
...so that residents in every neighbourhood have **equitable access** to services that meet their **changing needs.**



## 2 shared community spaces

We will accelerate the  
**enhancements of our  
physical spaces...**

...to establish more  
**welcoming, safe, inclusive  
and sustainable** multi-  
use environments that **build  
resilience and belonging**  
in every neighbourhood.

## project history

There is no District Library in the downtown east side of the City.

TPL has been looking for opportunities to relocate and expand the St. Lawrence branch since 2008 – when the branch was first included in the Library's 10-year Capital Plan.

271 Front Street was identified as the new district library location and TPL worked co-operatively with the City on the development of the First Parliament Site Heritage Master Plan.

Spring 2021, the Government of Ontario expropriated the First Parliament site for the Ontario Line construction.

125 The Esplanade was identified as another potential site and was approved by the City in March 2022.

# project history

Ward 10 Councillor requested an investigation to identify additional services and amenities be included on the site.

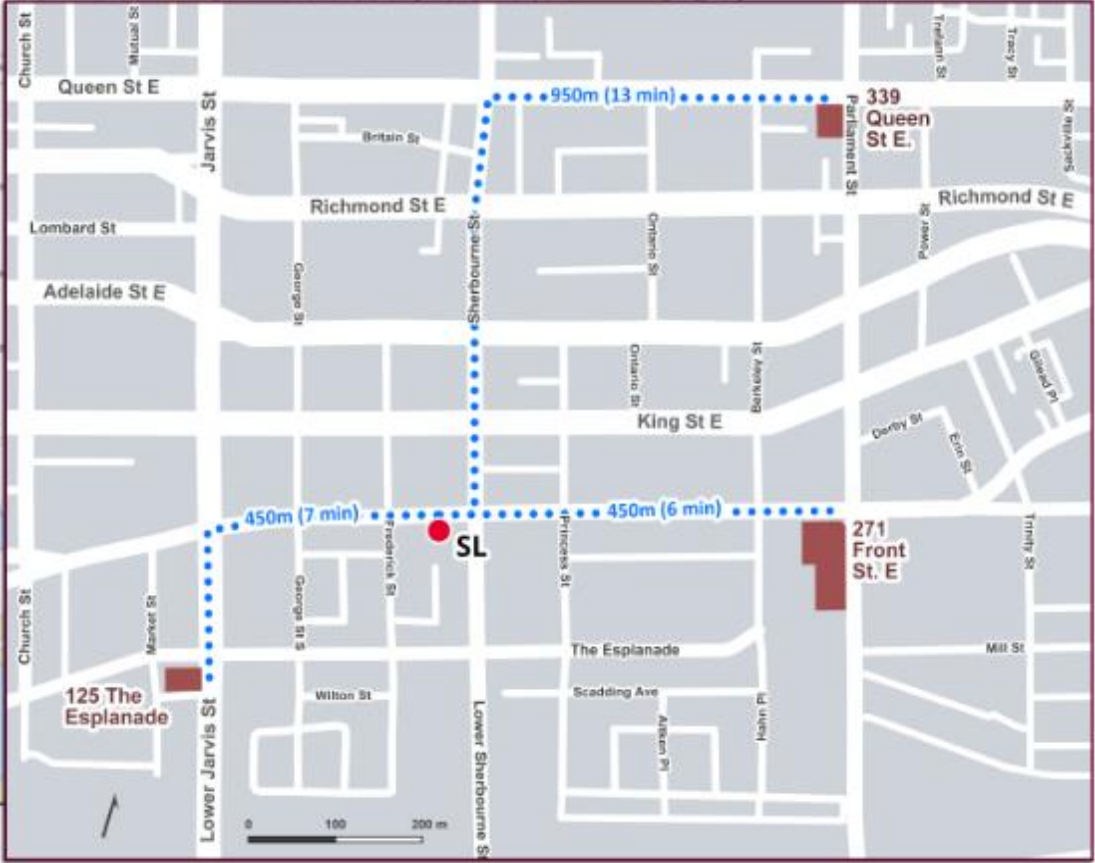
2023-2024 TPL worked with CreateTO, City of Toronto Planning, Transportation and Housing Secretariat and an external consultant on the feasibility and massing.

After careful consideration it was determined that it was not possible to accommodate the requirements of a district branch nor achieve the necessary rezoning at 125 The Esplanade and meet the requirements for housing.

TPL continued to work on locating a suitably sized site. The property at 339 Queen Street East was identified as it met the requirements for size and location. TPL and the City of Toronto undertook due diligence evaluations of the property and the purchase was finalized in December 2025.

This site allows the library to deliver this much needed community asset more quickly and more cost effectively than any other option.

# project history



# design team



**engineeringlink**  
building envelope & structure



**rybka**  
Ellard Willson



**CODENEXT**



# design team

William Greer Architectural Conservation & Craftsmanship Award  
Heritage Toronto Award 2016

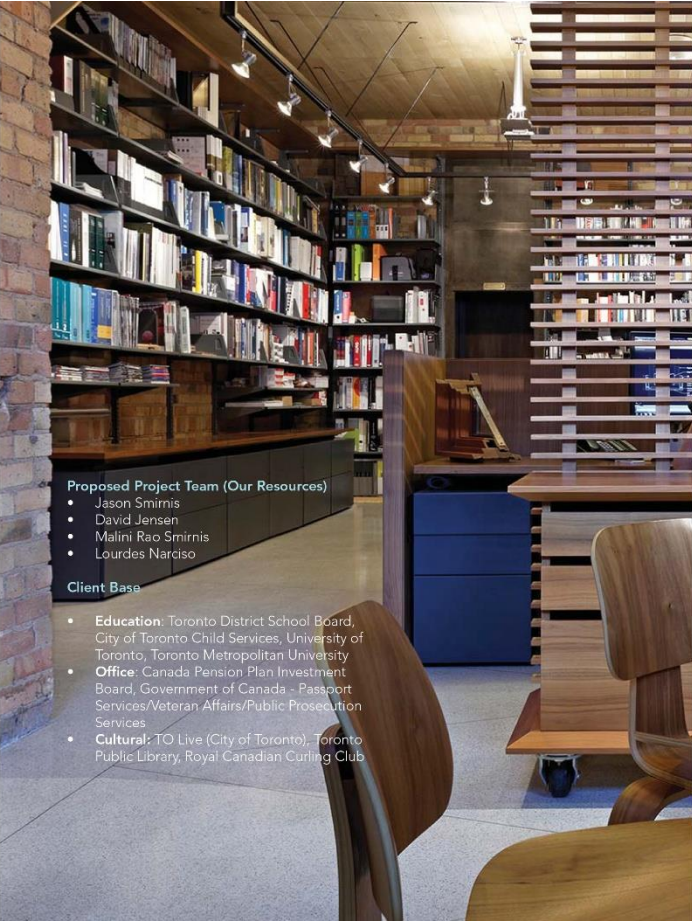
Building Arts  
Architects

324 Broadview Avenue



Broadview Avenue 1920 - City of Toronto Archives

# design team



Proposed Project Team (Our Resources)

- Jason Smirnis
- David Jensen
- Malini Rao Smirnis
- Lourdes Narciso

Client Base

- **Education:** Toronto District School Board, City of Toronto Child Services, University of Toronto, Toronto Metropolitan University
- **Office:** Canada Pension Plan Investment Board, Government of Canada - Passport Services/Veteran Affairs/Public Prosecution Services
- **Cultural:** TO Live (City of Toronto), Toronto Public Library, Royal Canadian Curling Club



# design team



Locke Library 1948 - Toronto Public Library Digital Archive



Locke Branch Library

Toronto Public Library  
2025



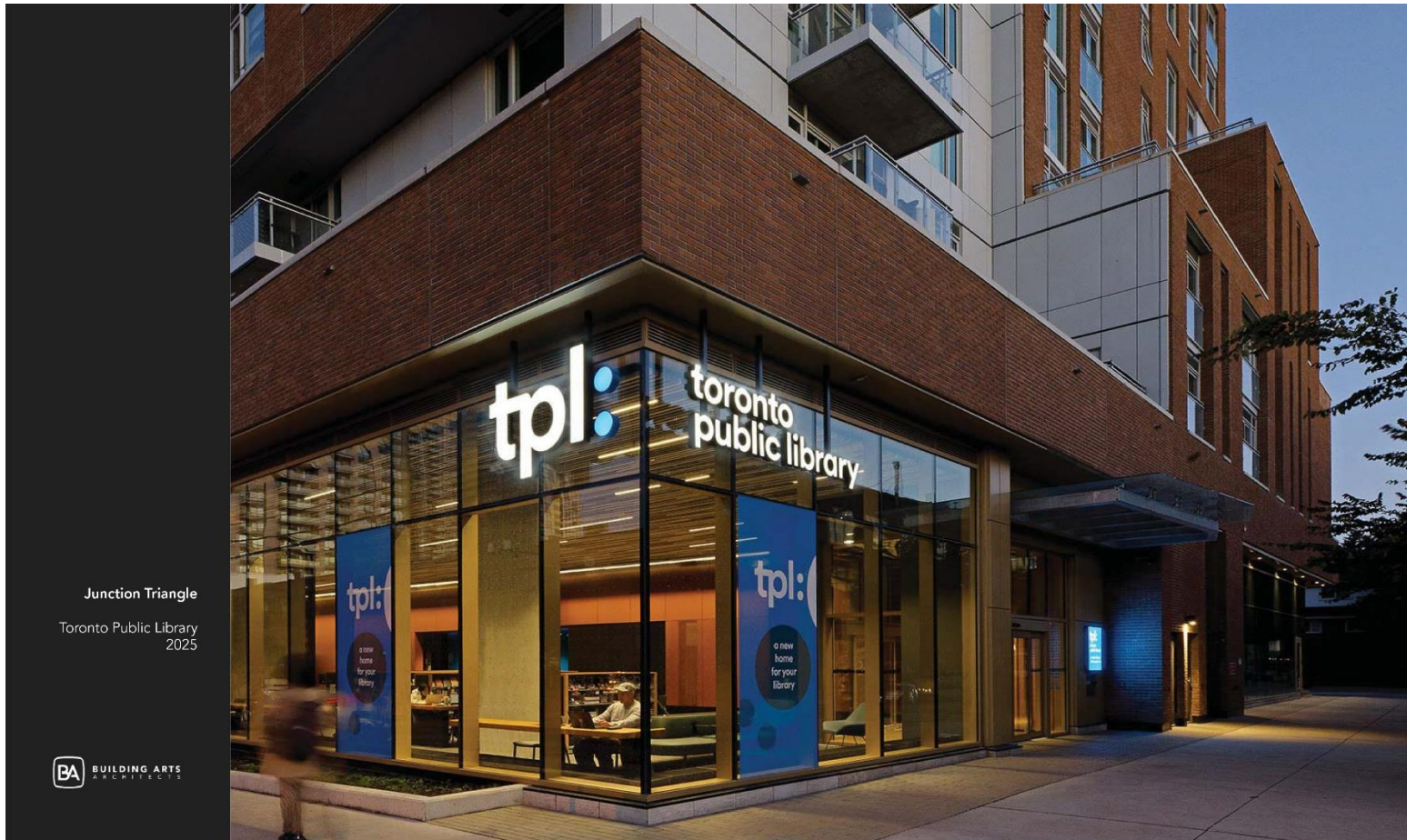
# design team



Locke Branch Library  
Toronto Public Library  
2025



# design team



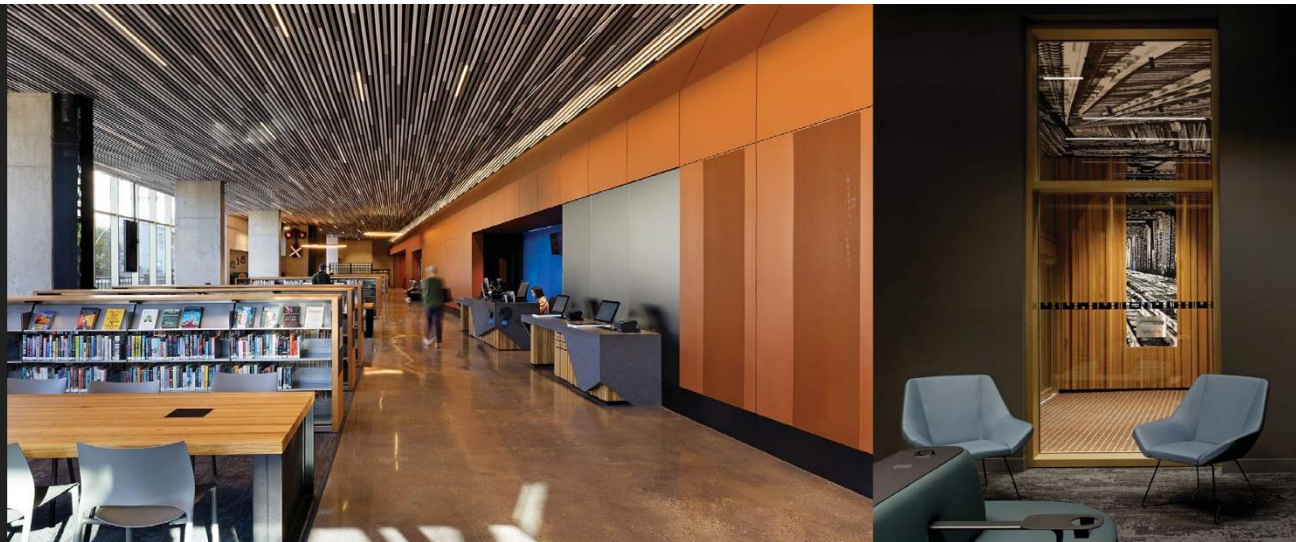
Junction Triangle

Toronto Public Library  
2025

tpl:

BA BUILDING ARTS  
ARCHITECTS

# design team



Junction Triangle  
Toronto Public Library  
2025



# design team



Runnymede  
Eatonville  
Lillian H. Smith

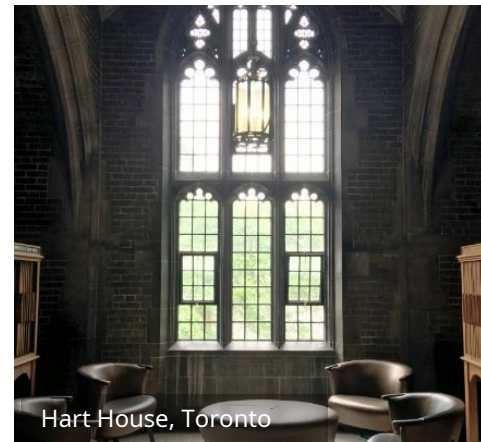
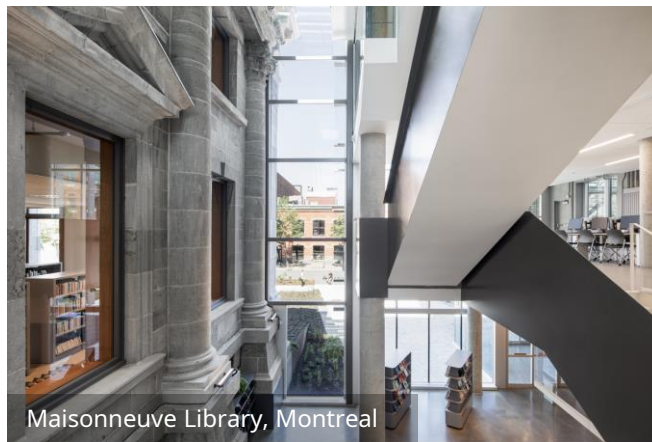
Toronto Public Library  
(Various)



BUILDING ARTS  
ARCHITECTS



# design team



# design team



# branch background



St. Lawrence branch opened in its current location in 1982.

It was the original home of TPL's Library on Wheels.

Branch is 4,833 sq ft (449 m<sup>2</sup>).

Serves a current catchment population of 30,756 people.

- 7 days of service – 55.5 hours weekly
- 27,668 item collection.
- 7 public Internet workstations
- Seating for 33 people

## St. Lawrence : performance measures



**+ 108,000 visits**



**+ 136,000 items  
borrowed**



**+ 2,700 new  
registrations**



**+ 77,000 holds  
placed**



**+ 11,000 computer  
sessions**



**+ 34,000 Wi-Fi  
Sessions**

## current state



- Branch is undersized
- No dedicated programming space
- Does not meet current accessibility standards
- Difficult to find the branch entrance
- Washroom is undersized and in poor condition
- Frequent closures of the branch; 24 since August 2020 for a total of 67 days

# service delivery model

TPL developed a Service Delivery Model that outlines the types of services to be offered and how those services are delivered.

The model is both practical and aspirational and is a key reference document we use in capital planning.

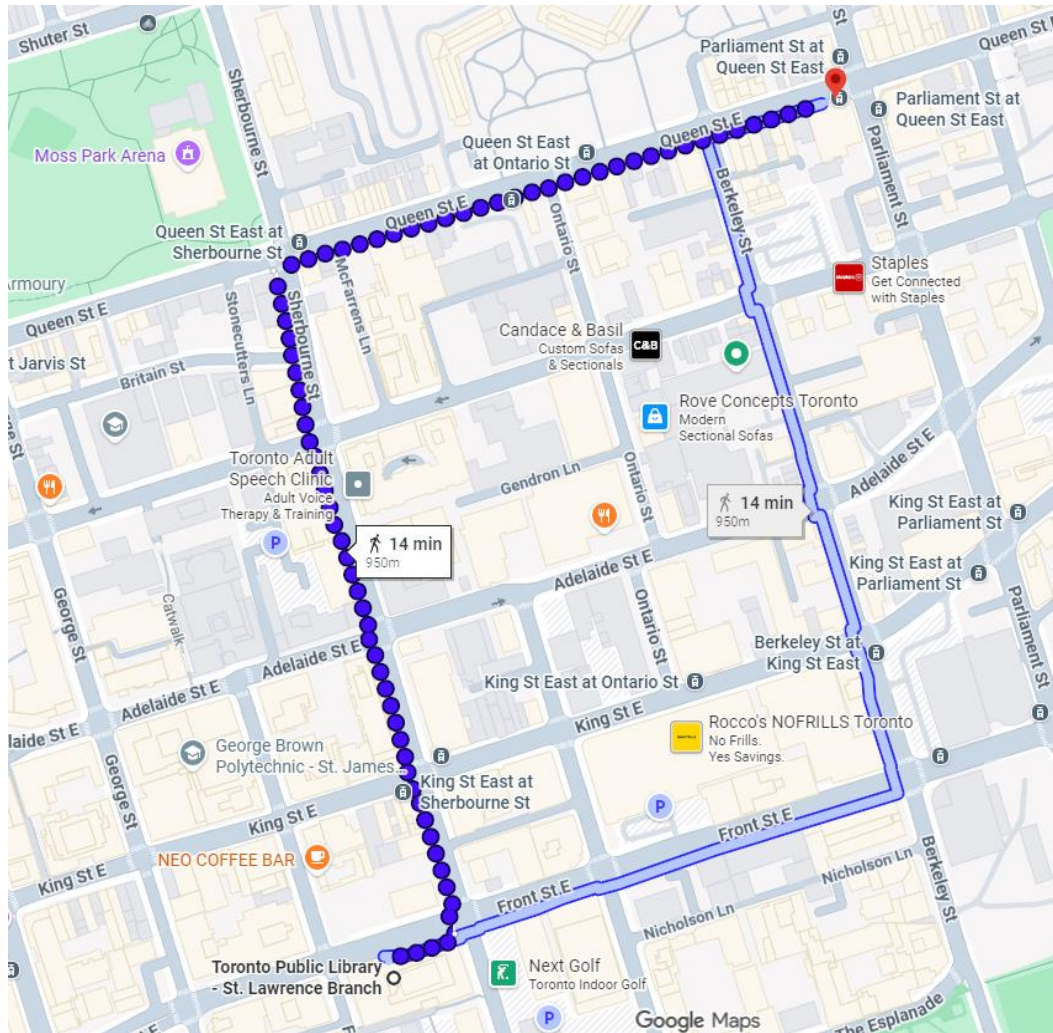
The goal for the new St. Lawrence branch has always been to build a 30,000 sq ft district level library that would provide services and amenities for a larger catchment area than what the current branch is able to do.

## service delivery model



# new location

- 339 Queen Street is 950 metres from the current location
- New location falls within the catchment area of 2.5 km
- Well-served by public transit and will be 400 m from the new Moss Park station on the Ontario line
- Branch staff and collections will move to new location after construction and fit up are completed



# new location



- New address has high street visibility in a prominent location at the corner of two major streets
- 30,000 sq ft will allow the library space to provide services and collections for this rapidly growing community
- Population projections show the future catchment area growing to +181,000, a 191% increase
- The building is already fully accessible, with two elevators
- Prominent windows allow for ample natural light
- The adaptive reuse of this heritage building saves a significant heritage asset for the City

# library features and services: welcoming exterior



Locke, photo credit Dave Whittaker



Wychwood, photo credit Doublespace

# library features and services: options for study and work



Ethnonnhawahstinen' photo credit TPL



Wychwood, photo credit Doublespace

# library features and services: options for seating



Bridlewood, photo credit TPL staff

Fort York, photo credit TPL staff



# library features and services: space for programming

Runnymede, photo credit Dave Whittaker



# library features and services: user education and computer workstations



Bridlewood Learning Centre, Photo credit TPL staff

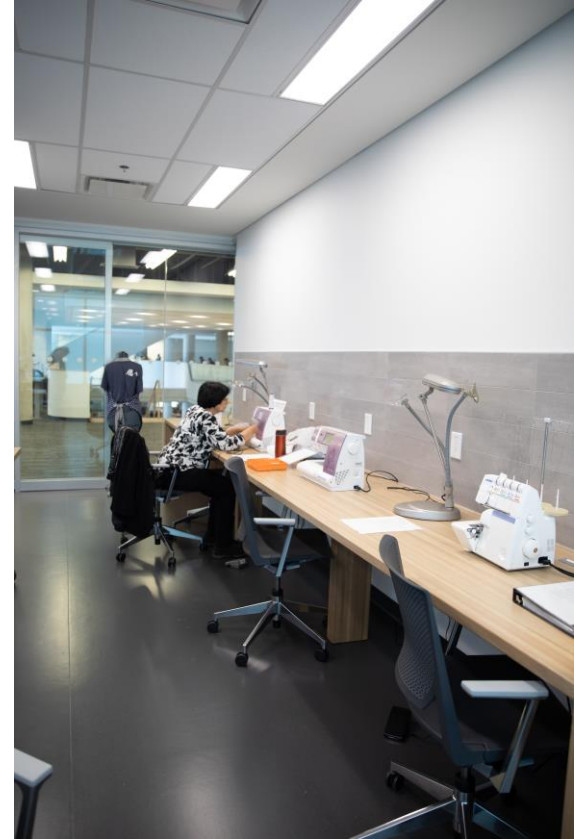
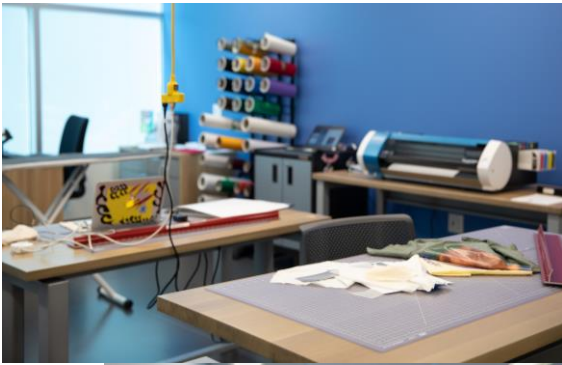


Fairview public computers, Photo credit TPL staff

# library features and services: digital innovation hub



# library features and services: fabrication studio



# library features and services: teen space



North York Central Library, photo credit TPL



Junction Triangle, photo credit Dave Whittaker

# library features and services: youth hub service



Malvern, photo credit TPL



York Woods, photo credit Tom Arbin

# library features and services: children's area



York Woods, photo credit Tom Arbin



Bridlewood, photo credit Doublespace

# library features and services: interactive early literacy centre



Scarborough Civic Centre, photo credit TPL



Junction Triangle, photo credit Dave Whittaker

# library features and services: tpl community services hub



# library features and services: collections



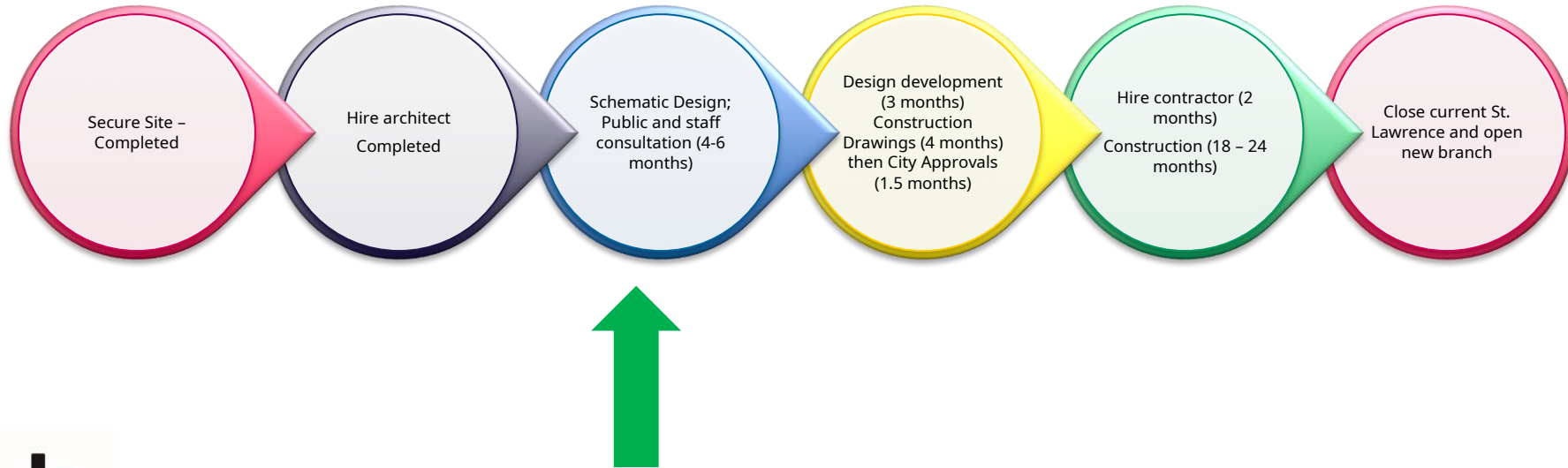
Fort York, photo credit KPMBv



Wychwood

# High Level Timeline

Timeline reflects from start of project initiation; preplanning and / or securing a site can precede this by years





# questions & feedback

# next steps: community consultation

Community consultation is a vital part of our renovation projects. We really want to hear from you!

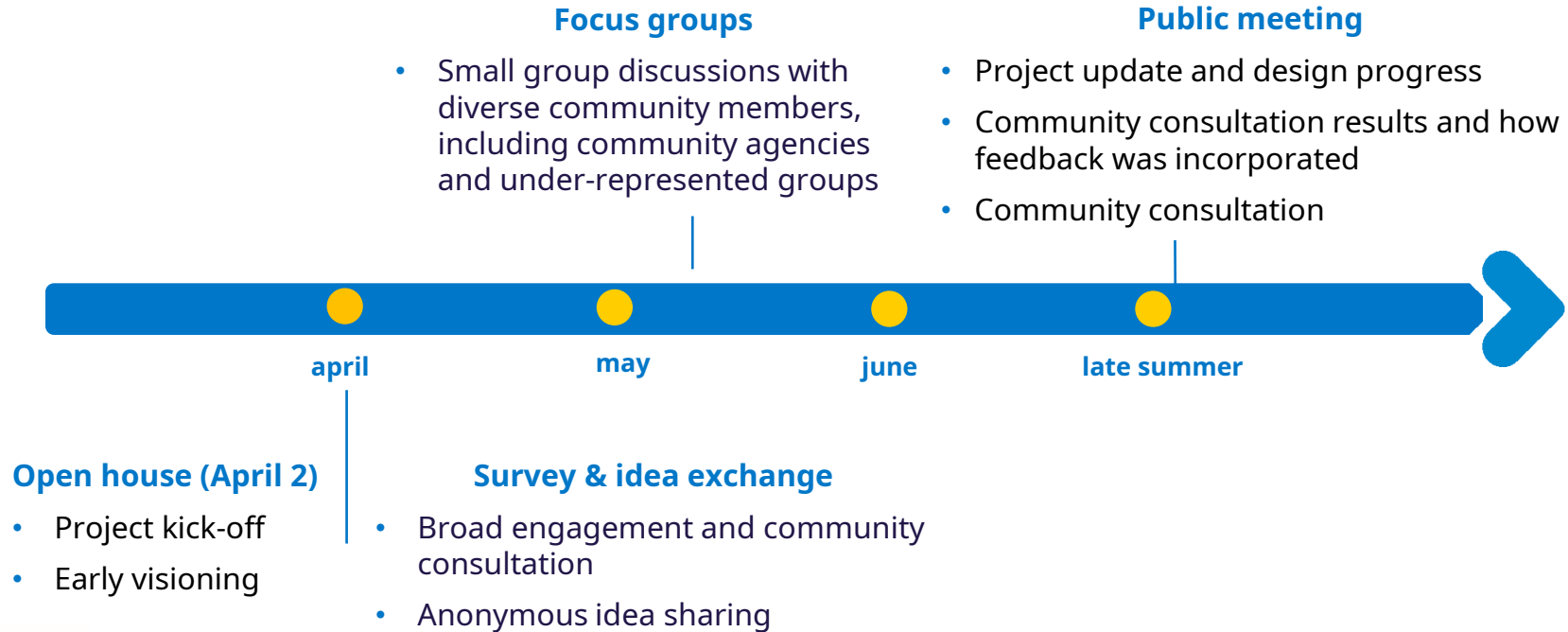
- Focus groups will begin in late April 2026 and if you are interested in participating in our focus groups, surveys or future public meetings, sign-up sheets are available this evening, and in the branch.
- You can also email:  
Leesa Tossios, Senior Manager [ltossios@tpl.ca](mailto:ltossios@tpl.ca)  
Susan Martin, Senior Manager, Capital Projects [smartin@tpl.ca](mailto:smartin@tpl.ca)  
Jonathan Demers, District Manager [jdemers@tpl.ca](mailto:jdemers@tpl.ca)



## help shape your library

- Your ideas help shape library spaces and services for you and your community
- There will be many ways to share your thoughts over the coming months
- We will share what we are planning and how your input is used.

# ways to share your feedback





**Thank you!**

**tpl:**